

# Hydraulic rotator

# A1.0410



Recomend with links and swing dampers:

### BR1 and BR4



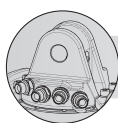
Without brakes

### BR10 and BR40

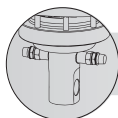


With single brake

2 years waranty



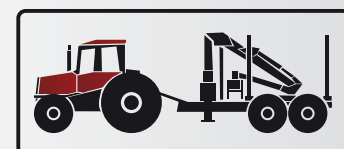
L73mm / PIN Ø25mm



Ø59mm level 50mm / PIN Ø30mm

	45 kN		
	1100 Nm at 25MPa		
	25 kN		
	23 kg		
	25 MPa		3/8"
	20 MPa		3/8"
	30 MPa		3/8"

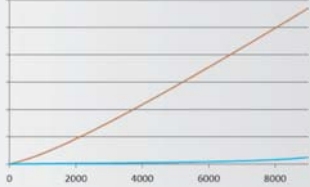
best for:



Since 2015 third quarter all Baltrotors 4t series rotators are performed in new, improved design.

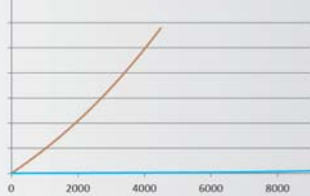
# A1.0410 dimensions mm [inch]

less wearing of the chamber



GR46 (2014 model)  
GR46 advanced performance (2015 model)

less wearing of the internal bushing

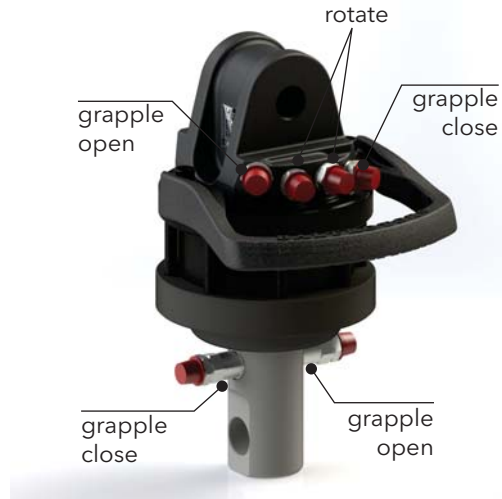
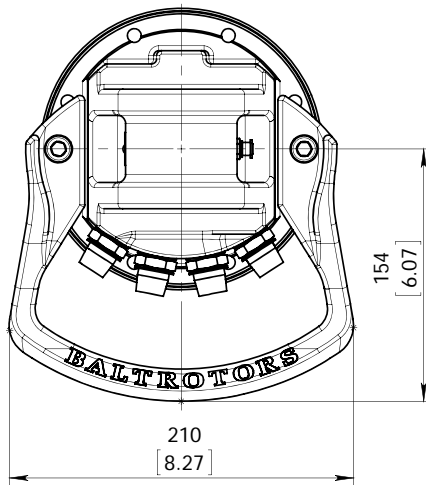
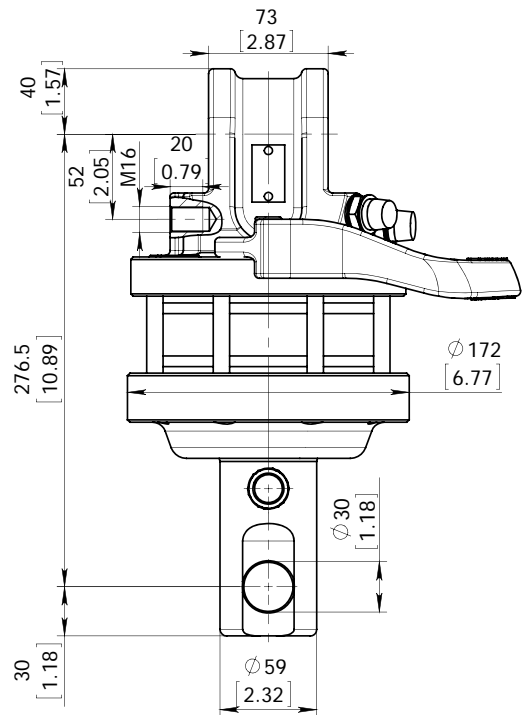
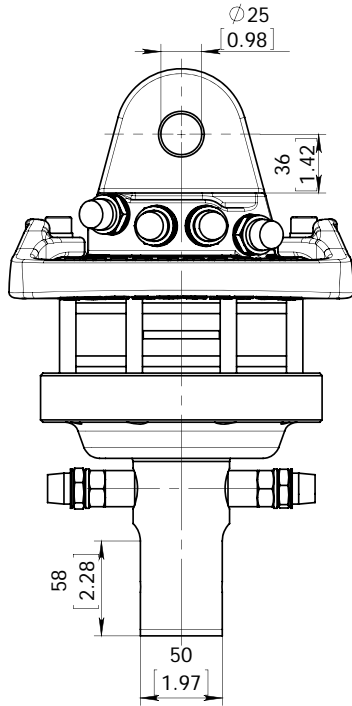


GR46 (2014 model)  
GR46 advanced performance (2015 model)

less wearing  
less spare parts  
by  
the same torque  
the same quality  
for  
the same money  
is  
more durability  
more efficiency



**GR4series**  
advanced performance



## Technical data

Rotation	Unlimited
Max axial load static, KN (lbf)	45 (10118)
Max axial load dynamic, KN (lbf)	25 (5621)
Torque at 25Mpa (3625psi), Nm (lb ft)	1100 (811)
Rec oilflow, l/min (US gallon)	20 (5.3)
Weight, kg (lb)	24 (53)
Max working pressure:	Connection:
Rotator ←R→	Max 25 MPa (3625 psi) G 3/8
Grapple / Tool open ←G→	Max 20 MPa (2900 psi) G 3/8
Grapple / Tool close →G←	Max 30 MPa (4350 psi) G 3/8